

craft express

craft express

MUG HEAT PRESS

USER MANUAL



SAFETY INSTRUCTIONS

Before using your equipment, thoroughly read the instruction manual.

1. Do not touch hot surfaces, always wear protective gloves during operation.
2. Close supervision is necessary when any equipment is used by or near children.
3. Do not leave the equipment unattended while in operation.
4. Never attempt to disassemble the equipment.
5. WARNING: Do not operate the device if visibly damaged.
6. WARNING: Ensure the supply cord is not trapped or damaged when positioning the equipment.
7. Do not immerse the equipment in water.
8. Keep the equipment away from fire or open flames.
9. Do not drop, impact, or puncture the equipment.
10. Do not expose the equipment to rain or moisture.
11. Use the equipment only for its intended purpose.
12. Ensure the area around the equipment is free from flammable items.
13. Let the machine cool down completely before moving or storing it.
14. The use of accessory attachments not recommended by the equipment manufacturer may cause injuries.
15. Perform regular maintenance checks as recommended by the manufacturer.
16. Have any repairs done by a qualified technician.

Electricity Safety

1. Avoid touching the power plug with wet hands to prevent electric shock.
2. Regularly check the power cord and plug for any signs of damage or wear.
3. Ensure proper grounding of the equipment to minimize fire and electric shock hazards.
4. Use the equipment in an environment where the power supply capacity exceeds the power consumption of the equipment to avoid malfunctions due to insufficient power supply capacity.
5. Turn off and unplug equipment well before a storm approaches to minimize potential damage.
6. Disconnect the power supply before carrying out any maintenance operations on the equipment.



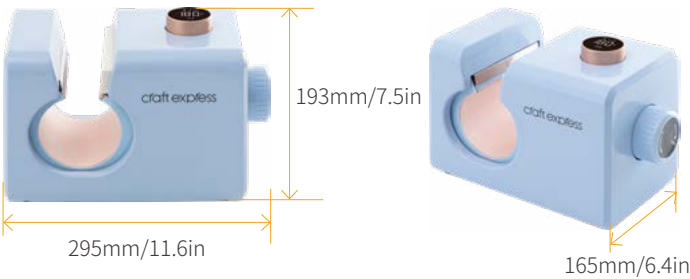
KNOW THE MACHINE



- | | |
|------------------------------|--------------------|
| 1 Heating Platen | 3 Pressure Knob |
| 2 Touch-screen Control Panel | 4 Power Cord Inlet |

| | |
|--|------------------------|
| Voltage | 110V, 60Hz /220V, 50Hz |
| Power | 303W(±5%)MAX |
| Temp. Range | 0-250°C (32-482 °F) |
| Time Range | 1-999 seconds |
| Compatible Diameter: 8-8.7cm/3.1-3.4in Max. Printable Length: 9.5cm/3.7in | |

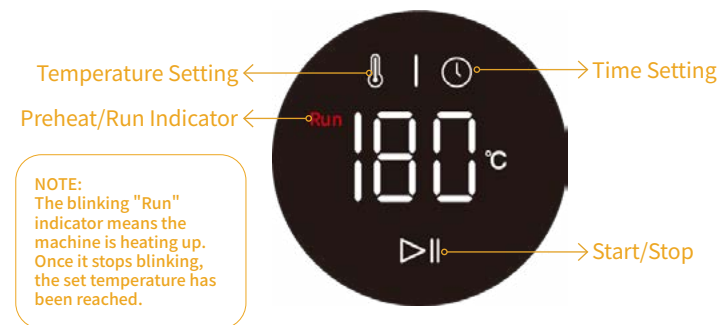
DIMENSION



HOW TO TURN YOUR HEAT PRESS ON AND OFF

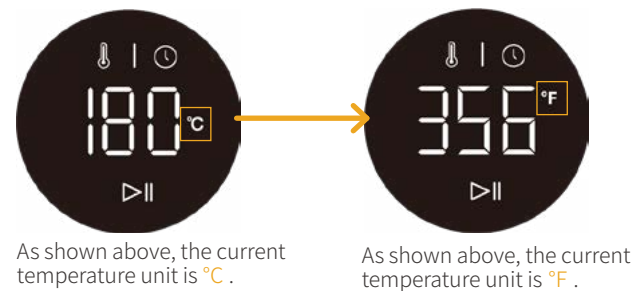
1. Plug in the power cable, and the display will turn on.
2. Long press "▶||" button for 5 seconds to turn on/off machine.

KNOW THE CONTROL PANEL

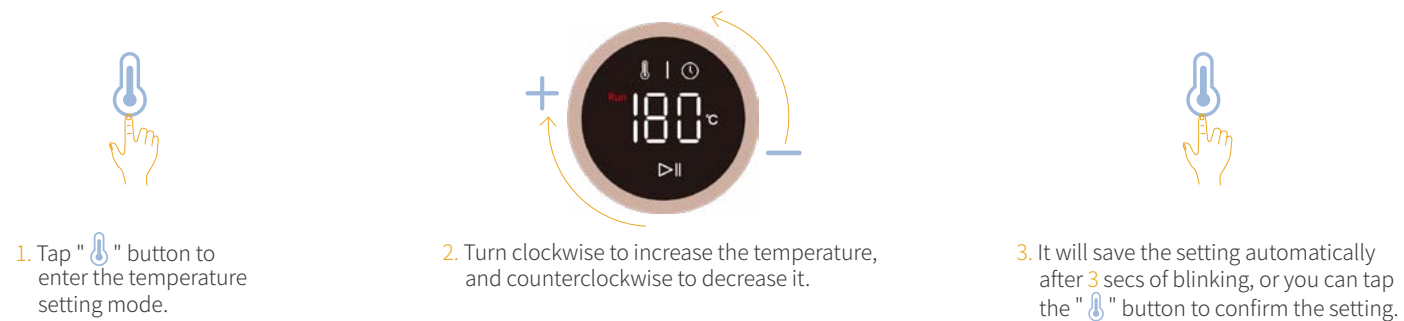


Switch between °F and °C

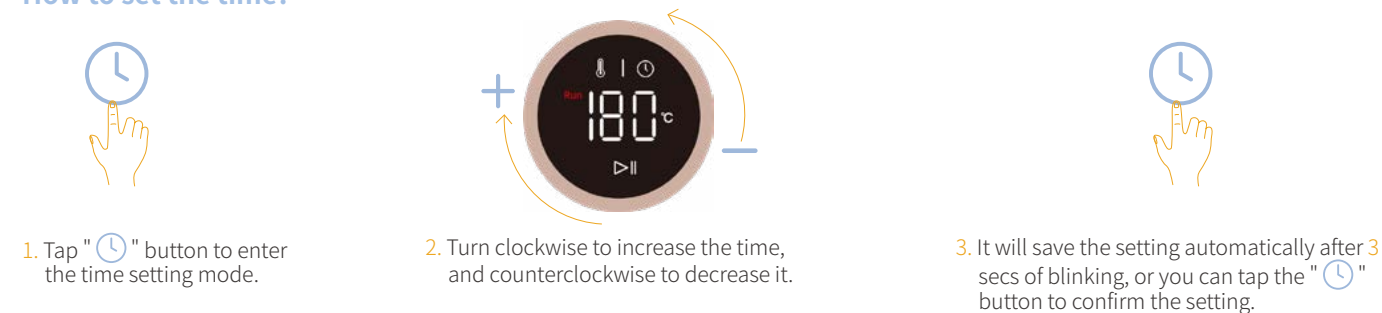
Long press "🌡️" button for 3 secs to switch between °C and °F.



How to set the temperature?



How to set the time?



Know the "▶||" Button.

1. Tap the "▶||" button to start the countdown.
2. Tap the "▶||" button again at any time to stop the countdown.

Note

The machine will record the parameters and unit set for your last run.



HOW TO PRINT A MUG?



1 Turn on the mug press.



2 Fix the image on the mug tightly with heat resistant tape.



3 Tap and rotate the knob to set time and temperature.



4 As the mug press heats up to the set temperature, put the mug into the mug press.



5 Turn the pressure knob to apply appropriate pressure to the mug.



6 Tap "▶||" to start printing.



7 Once the heat transfer is complete, turn the knob to release the mug. Then, enjoy your creation!

NOTICE:

- 1. Print on the sublimation paper with a mirror image, and ensure the image is securely fixed to the mug.
- 2. Wear heat-resistant gloves to prevent burns.
- 3. Adjust the printing time based on the size of the tumbler.
- 4. Use a mold when printing on plastic drinkware to prevent deformation.

PRINTING PARAMETERS

| | | | | | | | |
|--------------|------------------|------------------|----------------------------|------------------------------|-------------------------------|-----------------|-----------------|
| Product | | | | | | | |
| Product Name | 11oz Ceramic Mug | 15oz Ceramic Mug | Stainless Steel Coffee Cup | Stainless Steel Water Bottle | Stainless Steel Can Insulator | Aluminum Bottle | Glass Mason Jar |
| Temperature | 180°C /356 °F | 180°C /356 °F | 180°C /356 °F | 180°C /356 °F | 356 °F /180°C | 180°C /356 °F | 180°C /356 °F |
| Time | 280s | 280s | 60s | 60s | 60s | 60s | 150s |

NOTE:

- 1. Excluding preheat time.
- 2. Make sure to remove any plastic parts before printing.
- 3. The parameters may vary depending on factors like different printed design, paper quality, substrate type, weather conditions, and more.

FAQS:

| | |
|--------------------------------------|---|
| Colors are lighter | The temperature is too low, the pressure is uneven, or the time is too short. |
| Printed picture is vague | The heat transfer time is long, which causes the ink spread. |
| Colors are less bright | The pressure is too big or the temperature is too high. |
| Printed picture is partially vague | The heat is uneven. |
| Colors are different | The pressure is uneven or the surface of the substrate is uneven. |
| The paper sticks on the printed item | The temperature is too high or the coating of the item is in poor quality. |